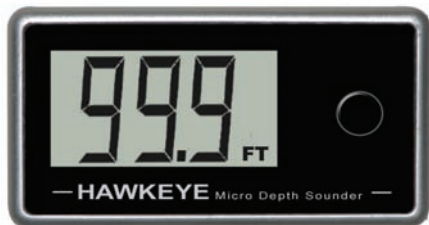


## Micro Digital Depth Sounder • Compact, Waterproof, Surface Mountable



Micro Liquid Crystal Display

Perfect for Any Vessel with Limited Dash Space... With its completely waterproof construction, micro-display housing, and Shoot-Thru sonar technology, the HawkEye® Micro Digital Depth Sounder is as much at home ripping across a lake at 70 mph on a PWC, as it is searching for a secluded cove on a tender. The depth sounders compact micro-display housing can be easily mounted within reach on any vessel's dash, while EasyTouch Programming allows one-touch access to a built-in audible depth alarm. An Auto-Off feature even kills the power, not your battery.

*Go Ahead, Douse it with Water and Hold the Throttle Wide Open.  
The Micro Digital Depth Sounder will Perform, WILL YOU???*

### FEATURES:



Digital Depth Sounder Module


- Algorithmic programming reduces false readings.
- Impressive depth readings tested at speeds over 70+ mph (113 kph).
- Compact, micro-display requires only 2 x 1.1 inches of mounting space.
- Reads in English and metric from 1.5 to 99.9 ft (.7 to 30.5 m).
- No glare, polarized LCD display provides spot-free viewing with or without sunglasses.
- Instant depth readings, 7 times per second, to the nearest 1/10<sup>th</sup> foot or meter.
- High speed, dual mount transducer (Transom/In-Hull).
- Shoot-Thru technology allows easy installation of the Glue-In Transducer on most solid fiberglass and aluminum hulls.
- Shallow water alarm with 2 stage audible and visual advanced warning system from 2 to 10 ft (1-3 m).
- External remote alarm warning horn.
- Automatic memory retention of all user settings.
- Integrated power harness with waterproof fuse assembly.
- 30 ft (9.1 m) transducer harness with waterproof plug.
- Impact resistant and waterproof .
- 2 Year Warranty



High Speed, Dual Mount Transducer (Transom or In-Hull)



## Perfect for Any Vessel With Limited Dash Space

|   |  |  |  |
|---|--|--|--|
|  | <b>SPECIFICATIONS</b><br>Model.....DF1120S<br>Dimensions....2" x 1.1" (50 x 26 mm)<br>Display Type....Polarized Liquid Crystal<br>Backlighting.....Not Applicable<br>Power Requirement.....11-14 Vdc | Current Drain.....40mA, Nominal<br>Mounting.....Surface<br>Units of Measure.....Feet & Meters<br>Depth Range Min.....1.5 ft (.7 m)<br>Depth Range Max.....99.9 ft (30.5 m)<br>Alarm Signaling.....Visual & Audible | Transducer Type.....Transom or Glue In (In-Hull)<br>Transducer Frequency.....200 KHZ<br>Transducer Beam Angle.....25 Degrees<br>Transducer Cable Length.....30 ft (9.1 m)<br>Alarm Range.....2-10 ft Full Range (1 to 3 m)<br>Waterproof Rating ....IPX7 (3 ft submersion for 30 min.)<br>Warranty.....2 Years |
|---|--|--|--|