

Handheld Sonar System PX • Depth, Temperature, and Fish



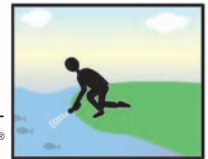
Featherweight, Incredibly Easy, Very Effective... Not only will this depth sounder give you instant depth readings, from 2.5 to 199 ft (.7 to 60 m), in 1/10th precision, but at the press of a button the display will give real time temperature (water or air) and fish readings. Use it in the winter to shoot through ice before cutting your hole. Use it in the summer as a range finder and temperature meter while diving. Use it as a backup depth sounder on your pleasure boat or scan for channels in your dingy.

No matter how you use it, the HawkEye® Handheld Sonar System PX is the one piece of equipment you should never leave the dock without...

Side-Scan Fish Detecting Sonar - There is no guessing where the drop-offs are or where the fish are hiding when you use the HawkEye® Handheld Sonar System PX. One press of the button allows you to scan an area for drop-offs, ledges, or hiding fish within 199 ft (60 m). Scan under weeds, lily pads, or even docks for trophy lunkers before making a cast; the presence of fish is clearly indicated on the LCD.

FEATURES:

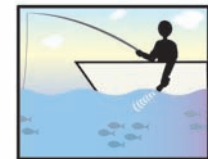
- 2,500 watts peak-to-peak power.
- Algorithmic programming reduces false readings.
- Depth readings from 2.5 to 199 ft (.7 to 60 m).
- Displays readings in English and Metric (ft/m, f/c)
- Waterproof, maintenance free switch.
- Instant depth readings, 4 times per second, to the nearest 1/10th foot or meter.
- Secure battery compartment for 4 x 'AA' batteries with 30 hours of continuous use.
- Water or air temperature readout to the nearest 1/10th degree Fahrenheit or Celsius.
- High impact, sure-grip housing.
- Fish indicator pinpoints hiding fish.
- Automatic Mode allows remote viewing of readings.
- Manual Mode gives one-touch readings.
- Shoot-Thru technology allows readings through ice or boat hulls.
- SoftGlow backlit display produces low intensity, low temperature lighting which prevents eye strain and condensation while providing unparalleled nighttime viewing.
- Waterproof to 200 ft (61 m) depths for diving.
- Floatable
- Integrated Wrist Strap
- 2 Year Warranty



Bank, Shoreline, Dock, Jetty



Float Tube, Raft, Tender



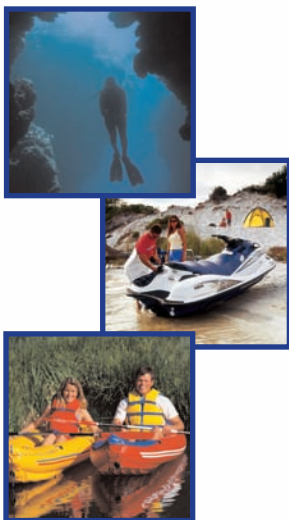
Boat, Kayak, Canoe, PWC



Ice Fishing & Surveying



Diving, Snorkeling



SPECIFICATIONS	Batteries.....4 x 'AA' (not included)	Temperature Readout.....14 to 122° F (-10 to 50° C)
Model.....DF2200PX	Battery Life.....30 Hours Continuous	Sonar Frequency.....200 KHZ
Dimensions.....7"x2" (177x50 mm)	Accuracy.....+/- 5%	Sonar Beam Angle.....25 Degrees
Weight......8 oz (.2 kg)	Sonar Range Min..... 2.5 ft (.7 m)	Operational Environment.....0 to 122° F (-18 to 50° C)
Display Type....Polarized Liquid Crystal	Sonar Range Max.....199 ft (60 m)	Waterproof RatingIPX8 (continuous submersion)
Backlighting.....Green SoftGlow	Depth Reading Increments.....1 ft/m	Waterproof Limit.....200 ft (61 m)
	Units of Measure.....Ft, M / °F, °C	Warranty.....2Years